

## CLEVERBOARD 3 / LYNX EXERCISES

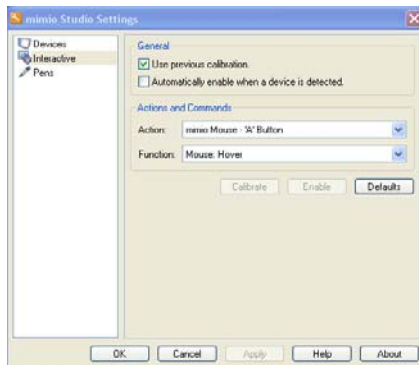
### EXERCISE 1

1. From the taskbar on the bottom right hand side of the screen, locate the icon :



right click on the icon and left click on the word “Settings”.

2. From the next screen that appears make sure the word “Interactive” is selected and left click on the word calibrate.



3. The screen will change to white with a red cross in a black circle, take the interactive pen and press perpendicularly to the screen, chase the crosses around the board, on the 9<sup>th</sup> cross the screen will change, press “OK”
4. Open “Lynx” software.
5. Select pen mode, change pen colour to blue and write a few words on the screen.
6. Select new page and write “page 2”.
7. Select new page and write “page 3”
8. Highlight “page 3” with either pen highlighter or block highlighter function.
9. Select a circle from the filled shapes menu and insert it onto the page.
10. Go to full screen mode and insert the word “circle” in typed text next to the circle.
11. Activate “curtain function” to reveal and hide your work so far.
12. Go back to workbook mode and create a new page.
13. Open the thumbnails view and dock it into the pane.
14. Open the controls tab and dock it into the pane.
15. Select “backgrounds” and insert your required background onto your clean page.
16. Go to full screen view and select spotlight function, bring up the visibility of the background to 30% and maneuver the spotlight around the page.
17. Go back to workbook mode and create a new page.
18. Pull up the “clock” function set the clock to time down for a 10 minute examination, start it counting down but don’t wait the full 10 minutes advance the hands to 0 minutes and see what happens.
19. Close Lynx down and store your lesson plan as “Lesson 1” under the default storage area.
20. Re-open Lynx, find Lesson 1 open it and create one more page as the end slide of your choosing.
21. Close Lynx.

## CLEVERBOARD 3 / LYNX EXERCISES

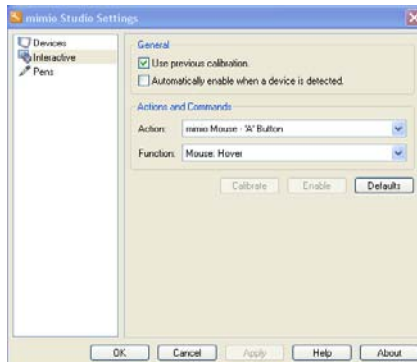
### EXERCISE 2

1. From the taskbar on the bottom right hand side of the screen, locate the icon :



right click on the icon and left click on the word “Settings”.

2. From the next screen that appears make sure the word “Interactive” is selected and left click on the word calibrate.



3. The screen will change to white with a red cross in a black circle, take the interactive pen and press perpendicularly to the screen, chase the crosses around the board, on the 9<sup>th</sup> cross the screen will change, press “OK”
4. Open Lynx software
5. Select a map of the UK and position it in the middle of the page in full screen mode.
6. Insert in TEXT mode the names of three random towns or cities so that they can be individually selected at a later stage.
7. Circle Ireland and write its name in freehand.
8. Manouver the three cities names to their approximate positions on the map of the UK.
9. Activate spotlight mode, bring the background into view to 40% and highlight the name of the last town entered.
10. Go back to workbook mode.
11. Go into Clipart.
12. Find a picture of a BBQ and insert it into a new page.
13. Find some pictures of food that you might eat at a BBQ and insert into the page.
14. Create a new page.
15. Create a numbered square, 12 x table, and demonstrate how it could be used to teach multiplication tables by hiding some numbers and revealing them to the class, find two methods of achieving this.
16. Close Lynx software and name your lesson plan “lesson 2”
17. Re-open Lynx and find “Lesson 2” create another page at the end of your slides of your choice.
18. Close Lynx.

## CLEVERBOARD 3 / LYNX EXERCISES

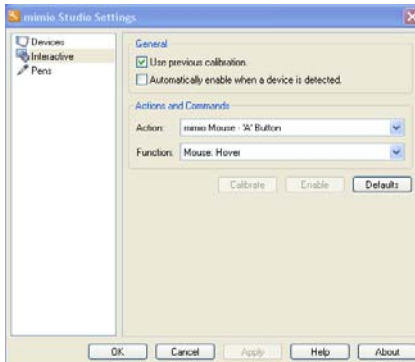
### EXERCISE 3

1..From the taskbar on the bottom right hand side of the screen, locate the icon :



right click on the icon and left click on the word “Settings”.

2.From the next screen that appears make sure the word “Interactive” is selected and left click on the word calibrate.



3. The screen will change to white with a red cross in a black circle, take the interactive pen and press perpendicularly to the screen, chase the crosses around the board, on the 9<sup>th</sup> cross the screen will change, press “OK”
4. Open Lynx software.
5. Select handset mode to take you out of workbook mode
6. Make the handset invisible by using the slide button and then bring it back into view on screen.
7. Position handset to the side of the screen, bottom left.
8. Open another application, Powerpoint, Word or Excel would be good.
9. Work in this application, running slide show or adding information in Word or Excel.
10. Select annotation mode and draw on top of your open application.
11. Return to Powerpoint, Word or Excel.
12. Continue to work on the application
13. Go back to Lesson Plan mode and view your captured page in full screen mode.
14. Create a new page.
15. Go back to handset mode.
16. Open any other application of your choice.
17. Take a snapshot of the top left hand corner of your open application using “rectangular area” function.
18. Go back to lesson planning mode and reposition your image to centre of screen.
19. Annotate on top of the image in free hand describing what it is.
20. Close Lynx software and name your lesson plan “lesson 3”
21. Re-open Lynx and find “Lesson 3” create another page at the end of your slides of your choice.
22. Close Lynx.